



Aviation Obstruction Light Series





Low Intensity

Low intensity aviation obstruction light

Type A & Type B

H<45m



(With Mounting)

Name	Parameter
FAA Classify	L-810
Type	GS-LI/B GS-LI/A
Operating Voltage	AC85V~AC265V, DC12V~DC48V available
Power Supply Frequency	50HZ ~ 60HZ
Power Consumption	≤3W
Working Mode	Steady Burning, or Flashing 20~60 times/min
Light Intensity	Type B ≥32.5cd Type A≥10cd
Horizontal Out-put	360°
Vertical Divergence	10°
Light Source Service Life	≥20 years
Emitting Color	Red
Overall Size(mm)	136(D) x 220(H)
Installation Size	¾ inches or 1 inch, Chassis install
IP Standard	IP67
Optical Ambient Brightness	50/100Lux
Ambient Temperature	-40°C~70°C
Net Weight	1.2kg
Anti-wind Ability	120m/s



Low Intensity

Low intensity double aviation obstruction light

Type A & Type B

H<45m



Name	Parameter
FAA Classify	L-810
Type	GS-LI/D
Operating Voltage	AC85V~AC265V, DC12V~DC48V available
Power Supply Frequency	50HZ ~ 60HZ
Power Consumption	≤3W
Working Mode	Steady Burning, Flashing, Flashing alternately
Light Intensity	Type B ≥32.5cd Type A≥10cd
Horizontal Out-put	360°
Vertical Divergence	10°
Light Source Service Life	≥20 years
Emitting Color	Red
Overall Size(mm)	285 x 130 x 315
Installation Size	100mm x M10 x 4
IP Standard	IP67
Optical Ambient Brightness	50/100Lux
Ambient Temperature	-40°C~70°C
Net Weight	3kg
Anti-wind Ability	120m/s



Low Intensity

Low intensity aviation obstruction light- New

Type A & Type B

H<45m



(With Mounting)

Name	Parameter
FAA Classify	L-810
Type	GS-LI/B GS-LI/A (New Model)
Operating Voltage	AC85V~AC265V, DC12V~DC48V available
Power Supply Frequency	50HZ ~ 60HZ
Power Consumption	≤3W
Working Mode	Steady Burning, or Flashing 20~60 times/min
Light Intensity	Type B ≥32.5cd Type A≥10cd
Horizontal Out-put	360°
Vertical Divergence	10°
Light Source Service Life	≥20 years
Emitting Color	Red
Overall Size(mm)	136(D) x 220(H)
Installation Size	¾ inches or 1 inch, Chassis install
IP Standard	IP65
Optical Ambient Brightness	50/100Lux
Ambient Temperature	-40°C~70°C
Net Weight	1kg
Anti-wind Ability	120m/s



Low Intensity

Low intensity double aviation obstruction light

Type A & Type B

H<45m



Name	Parameter
FAA Classify	L-810
Type	GS-LI/D (New Model)
Operating Voltage	AC85V~AC265V, DC12V~DC48V available
Power Supply Frequency	50HZ ~ 60HZ
Power Consumption	≤3W
Working Mode	Steady Burning, Flashing, Flashing alternately
Light Intensity	Type B ≥32.5cd Type A≥10cd
Horizontal Out-put	360°
Vertical Divergence	10°
Light Source Service Life	≥20 years
Emitting Color	Red
Overall Size(mm)	292 x 130 x 220
Installation Size	100mm x M10 x 4
IP Standard	IP67
Optical Ambient Brightness	50/100Lux
Ambient Temperature	-40°C~70°C
Net Weight	3kg
Anti-wind Ability	120m/s



Low Intensity

Low intensity aviation obstruction light

Type C

H<45m



Name	Parameter
FAA Classify	L-810
Type	GS-LI/C
Operating Voltage	AC85V~AC265V, DC12V~DC48V available
Power Supply Frequency	50HZ ~ 60HZ
Power Consumption	≤15W
Working Mode	Steady Burning
Light Intensity	≥200cd
Horizontal Out-put	360°
Vertical Divergence	≥10°
Light Source Service Life	≥20 years
Emitting Color	Red
Overall Size(mm)	255(D) x 210(H)
Installation Size	245(D) x M8
IP Standard	IP68
Optical Ambient Brightness	50/100Lux
Ambient Temperature	-40°C~70°C
Net Weight	3.2kg
Anti-wind Ability	80m/s



Medium Intensity

Medium intensity aviation obstruction light

Type B

45M<H<105M



Name	Parameter
FAA Classify	L-864
Type	GS-MI/B
Operating Voltage	AC85V~AC265V, DC12V~DC48V available
Power Supply Frequency	50HZ ~ 60HZ
Power Consumption	≤20W
Working Mode	Flashing 20 times/min
Flash ON time	200ms
Light Intensity	≥2000cd ± 25%
Horizontal Out-put	360°
Vertical Divergence	≥3°
Light Source Service Life	≥20 years
Emitting Color	Red
Overall Size(mm)	255(D) x 210(H)
Installation Size	234(D) x M8
IP Standard	IP68
Optical Ambient Brightness	50/100Lux
Ambient Temperature	-40°C~70°C
Net Weight	3.8kg
Anti-wind Ability	80m/s



Medium Intensity

Medium intensity aviation obstruction light

Type A

105M<H<150M



Name	Parameter
FAA Classify	L-864/865
Type	GS-MI/A
Operating Voltage	AC85V~AC265V, DC12V~DC48V available
Power Supply Frequency	50HZ ~ 60HZ
Power Consumption	≤20W
Working Mode	Flashing 40~60 times/min
Flash ON time	200ms
Light Intensity	2000cd ± 25% ~ 20000cd ± 25%~
Horizontal Out-put	360°
Vertical Divergence	≥3°
Light Source Service Life	≥20 years
Emitting Color	White
Overall Size(mm)	255(D) x 210(H)
Installation Size	234(D) x M8
IP Standard	IP68
Optical Ambient Brightness	50/100Lux
Ambient Temperature	-40°C~70°C
Net Weight	3.8kg
Anti-wind Ability	80m/s



Medium Intensity

Medium intensity Double Color aviation obstruction light

105M<H<150M



Name	Parameter
FAA Classify	L-864/865
Type	GS-MI/D
Operating Voltage	AC85V~AC265V, DC12V~DC48V available
Power Supply Frequency	50HZ ~ 60HZ
Power Consumption	≤20W
Flashing Rate	White light: 40 times/min Red light: 20~40 times/min
Flash ON time	200ms at night, 100ms at daytime
Light Intensity	2000cd±25% ~ 20000cd±25%~
Horizontal Out-put	360°
Vertical Divergence	≥3°
Light Source Service Life	≥20 years
Emitting Color	White at daytime, red at night
Overall Size(mm)	255(D) x 210(H)
Installation Size	234(D) x M8
IP Standard	IP68
Optical Ambient Brightness	50/100Lux
Ambient Temperature	-50°C~65°C
Net Weight	5.5kg
Anti-wind Ability	80m/s

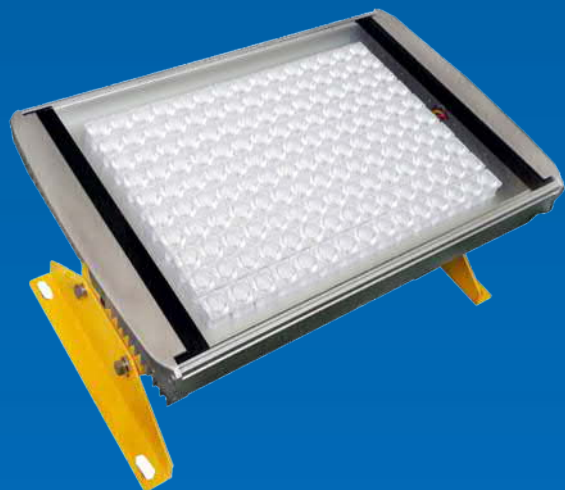


High Intensity

High intensity aviation obstruction light

Type A

H>150M



Name	Parameter
FAA Classify	L-856/857
Type	GS-HI/A
Operating Voltage	AC120V~AC265V available
Power Supply Frequency	50HZ ~ 60HZ
Power Consumption	≤60W
Working Mode	Flashing 40~60 times/min
Flash ON time	70ms
Light Intensity	2,000cd ± 25% ~ 20,000cd ± 25% ~200,000cd ± 25%
Vertical Divergence	3° ~ 7°
Horizontal Divergence	90° ~ 120°
Light Source Service Life	≥20 years
Emitting Color	White
Overall Size(mm)	460 x 305 x 198
Installation Size(mm)	415 x 220 x M8
IP Standard	IP68
Optical Ambient Brightness	50/100Lux
Ambient Temperature	-40°C ~ 60°C
Net Weight	15kg
Anti-wind Ability	80m/s
Ambient Brightness 500cd/m ²	200,000cd ± 25%
Ambient Brightness 50 ~ 500cd/m ²	20,000cd ± 25%
Ambient Brightness <50cd/m ²	2,000cd ± 25%

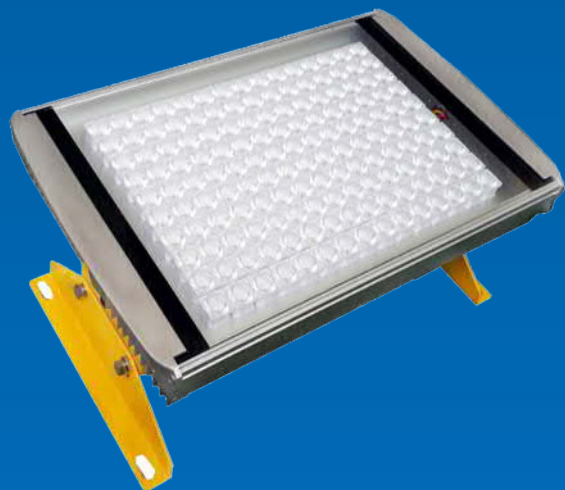


High Intensity

High intensity aviation obstruction light

Type B

H>150M



Name	Parameter
FAA Classify	L-856
Type	GS-HI/B
Operating Voltage	AC120V~AC265V available
Power Supply Frequency	50HZ ~ 60HZ
Power Consumption	≤40W
Working Mode	Flashing 40~60 times/min
Flash ON time	70ms
Light Intensity	2,000cd ± 25% ~ 20,000cd ± 25% ~ 100,000cd ± 25%
Vertical Divergence	7°
Horizontal Divergence	180°
Light Source Service Life	≥10 years
Emitting Color	White
Overall Size(mm)	460 x 305 x 198
Installation Size(mm)	415 x 220 x M8
IP Standard	IP68
Optical Ambient Brightness	50/100Lux
Ambient Temperature	-40°C ~ 50°C
Net Weight	15kg
Anti-wind Ability	80m/s
Ambient Brightness 500cd/m ²	100,000cd ± 25%
Ambient Brightness 50 ~ 500cd/m ²	20,000cd ± 25%
Ambient Brightness <50cd/m ²	2,000cd ± 25%



High Intensity

High intensity aviation obstruction light

Type A & Type B

H>150M



Name	Parameter
FAA Classify	L-856/857
Type	GS-HI/O
Operating Voltage	AC120V~AC265V available
Power Supply Frequency	50HZ ~ 60HZ
Power Consumption	≤40W
Working Mode	Flashing 40~60 times/min
Flash ON time	70ms
Light Intensity	Type A 2000~200000cd (±25%) Type B 2000~100000cd (±25%)
Vertical Divergence	7°
Horizontal Divergence	360°
Light Source Service Life	≥10 years
Emitting Color	White
Overall Size(mm)	234 (D) x 406(H)
Installation Size(mm)	180 x M10
IP Standard	IP68
Optical Ambient Brightness	50/100Lux
Ambient Temperature	-40°C ~ 50°C
Net Weight	16kg
Anti-wind Ability	80m/s
Ambient Brightness 500cd/m ²	Type A 200,000cd±25% Type B 100,000cd±25%
Ambient Brightness 50 ~ 500cd/m ²	20,000cd±25%
Ambient Brightness <50cd/m ²	2,000cd±25%



Solar Powered Low Intensity

Low Intensity Solar Powered
Obstruction Light

Type B

H<45M



Name	Parameter	Name	Parameter
Type	GS-LS/G	FAA Standard	L-810
Power Supply	Mono crystalline silicone solar panel	Emitting Color	Red
Battery Capacity	3.2V/3.3AH	Battery Type	Replaceable Lithium Iron Phosphate Battery
Battery Life	5~8 Years	Light Source Service Life	>100000 hours
Solar Panel Power	2W 5.5V	Solar Panel Life	>20years
Instantaneous Power	≤2W	Vertical Divergence	>10°
Visual Range	<5km	Horizontal Out-put	360°
Light Source	LED	Overall Size(mm)	186(D) x 190(H)
Storage Temperature	-40° C ~ 70° C	Installation Size	φ170mm × M6
Working Temperature	-20° C ~ 60° C	Anti-wind Ability	80m/s
Weight	1.2kg	Steady Light Intensity	20cd
IP standard	IP68	Working mode	Flashing / steady burning
Continuous Working time without sunlight	> 20days(work 10 hours a day)	Optional Function	GPS sync flash



Solar Powered Low Intensity

Low Intensity Double Solar
Powered Obstruction Light

Type B

H<45M



Name	Parameter	Name	Parameter
Type	GS-LS/T	FAA Standard	L-810
Power Supply	Mono crystalline silicone solar panel	Optional Emitting Color	Red, Yellow, Amber, Green, Blue, White
Battery Capacity	6.4V3AH	Battery Type	Replaceable Lithium Iron Phosphate Battery
Battery Life	5~8 Years	Light Source Service Life	>100000 hours
Solar Panel Power	4W	Solar Panel Voltage	8V
Power Consumption	≤0.5W	Solar Panel Life	>20years
Visual Range	<5km	Vertical Divergence	>10°
Light Source	LED	Horizontal Out-put	360°
Storage Temperature	-40° C ~ 70° C	Overall Size(mm)	186 x 356 x 282
Working Temperature	-20° C ~ 60° C	Installation Size	100mm×M12
Weight	3kg	Anti-wind Ability	80m/s
IP standard	IP68	Steady Light Intensity	32.5cd
Continuous Working time without sunlight	> 20days(work 10 hours a day)	Working mode	Flashing / steady burning

Solar Powered Medium Intensity

Medium Intensity Solar Aviation

Obstruction Light

Type A

105M<H<150M



Name	Parameter	Name	Parameter
Type	GS-MS/A	FAA Standard	L865/866
Power Supply	Mono-crystalline silicone solar panel	Emitting Color	White
Battery Type	Lead Acid Battery	Battery Capacity	12V24AH
Solar Panel Power	8 W x 4pcs	Solar Panel Voltage	16.5V
Visual Range	40km	Vertical Divergence	7°
Power Consumption	≤45W	Horizontal Out-put	360°
Battery Life	2 Years	Solar Panel Life	>20 Years
Light Intensity	2,000 ~ 20,000cd	Light Source Service Life	>100000 hours
Light Source	LED	Overall Size (mm)	325(D) x 437(H)
Storage Temperature	-40° C ~ 70° C	Installation Size	φ270mm x M8
Working Temperature	-40° C ~ 50° C	Anti-wind Ability	80m/s
Weight	15kg	Working mode	Flash 40~60 times/min
IP Standard	IP66	Ambient Brightness Switch ON/OFF	300±100LUX



Solar Powered Medium Intensity

Medium Intensity Solar Aviation
Obstruction Light

Type B

45M<H<105M



Name	Parameter	Name	Parameter
Type	GS-MS/B	FAA Standard	L864
Light Source	LED	Light Source Service Life	>100000 hours
Power Supply	Mono-crystalline silicone solar panel	Emitting Color	Red
Solar Panel Voltage	16.5V	Battery Capacity	12V12AH
Solar Panel Power	6 W x 4pcs	Battery Type	Lead Acid Battery
Visual Range	15km	Vertical Divergence	3°
Power Consumption	≤15W	Horizontal Out-put	360°
Light Intensity	2000cd±25%	Overall Size (mm)	276(D) x 480(H)
Battery Life	2 Years	Installation Size	φ220mm x M12
Storage Temperature	-40° C ~ 70° C	Anti-wind Ability	80m/s
Working Temperature	-10° C ~ 60° C	Working mode	Flash 20times/min
Weight	8.5kg	IP Standard	IP68
Continuous Working time	15 days(10 hours a day)	Ambient Brightness Switch ON/OFF	300±100LUX

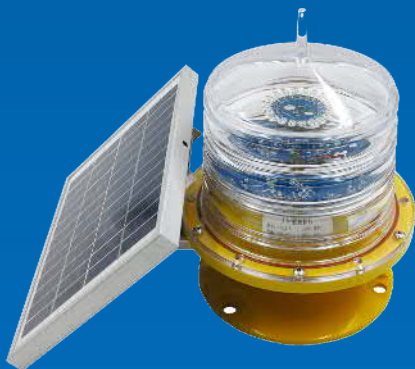


Solar Powered Medium Intensity

Medium Intensity Solar Aviation
Obstruction Light

Type B

45M<H<105M



Name	Parameter	Name	Parameter
Type	GS-MS/E	FAA Standard	L864
Light Source	LED	Light Source Service Life	>100000 hours
Power Supply	Mono-crystalline silicone solar panel	Battery Type	Replaceable Lithium Iron Phosphate Battery
Battery Capacity	6.4V6000mA	Instantaneous Power	≤0.1W
Solar Panel Power	6 W	Emitting Color	Red
Light Intensity	2000cd±25%	Vertical Divergence	>3°
Working mode	Steady Burning / Flashing	Horizontal Out-put	360°
Battery Life	5 ~ 8 Years	Overall Size (mm)	322 x 232 x 246
Storage Temperature	-55° C ~ 85° C	Installation Size	φ145mm x M11
Working Temperature	-50° C ~ 85° C	Anti-wind Ability	80m/s
Weight	3.5kg	IP Standard	IP68
Continuous Working time	120 days(10 hours a day)	Ambient Brightness Switch ON/OFF	300±100LUX

Solar Powered Medium Intensity

Medium Intensity Solar Aviation
Obstruction Light

Type B

45M<H<105M



Name	Parameter	Name	Parameter
Type	GS-MS/T	FAA Standard	L864/865
Light Source	LED	Light Source Service Life	>100000 hours
Power Supply	Mono-crystalline silicone solar panel	Emitting Color	Red
Solar Panel Voltage	16.5V	Battery Capacity	12V9AH
Solar Panel Power	6 W x 4pcs	Battery Type	Lead Acid Battery
Visual Range	15km	Vertical Divergence	3°
Power Consumption	≤20W	Horizontal Out-put	360°
Light Intensity	2000cd±25%	Overall Size (mm)	260(D) x 420(H)
Battery Life	2 Years	Installation Size	322 x 220mm x M12
Storage Temperature	-40° C ~ 70° C	Anti-wind Ability	80m/s
Working Temperature	-10° C ~ 60° C	Working mode	Flash 20times/min
Weight	8kg	IP Standard	IP65
Continuous Working time	15 days(10 hours a day)	Ambient Brightness Switch ON/OFF	300±100LUX



Solar Powered High Intensity

High Intensity Solar Aviation Obstruction

Light

Type A & Type B

H>150m



Name	Parameter	Name	Parameter
Type	GS-HI/AT GS-HI/BT	FAA Standard	L856/857
Power Supply	Mono-crystalline silicone solar panel	Emitting Color	White
Battery Type	Lead Acid Battery	Battery Capacity	12V24AH
Solar Panel Power	8 W x 4pcs	Solar Panel Voltage	16.5V
Visual Range	40km	Vertical Divergence	7°
Power Consumption	≤150W	Horizontal Out-put	360°
Battery Life	2 Years	Solar Panel Life	>20 Years
Light Intensity	Type A: 2,000 ~ 200,000cd Type B 2,000 ~ 100,000cd	Light Source Service Life	>100000 hours
Light Source	LED	Overall Size (mm)	325(D) x 437(H)
Storage Temperature	-40° C ~ 70° C	Installation Size	φ270mm x M8
Working Temperature	-40° C ~ 50° C	Anti-wind Ability	80m/s
Weight	15kg	Working mode	Flash 40~60 times/min
IP Standard	IP66	Ambient Brightness Switch ON/OFF	300 ± 100LUX